



State Name: Colorado

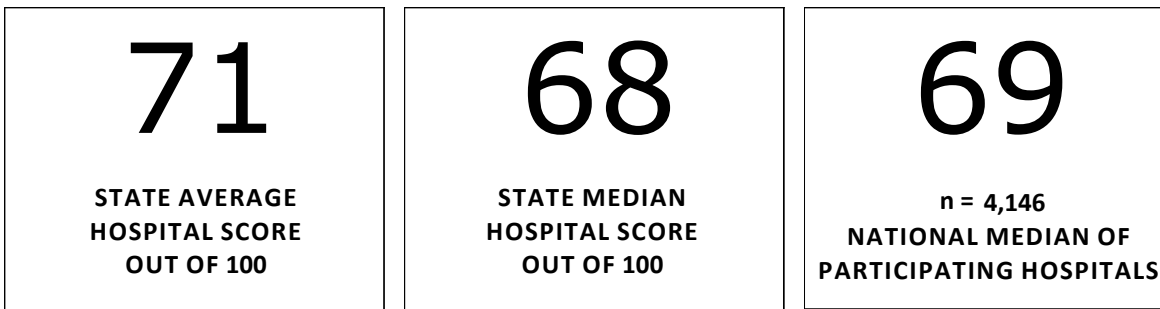
Report Date: 3/5/2014 11:35:46 AM

Number of Hospital Respondents: 78

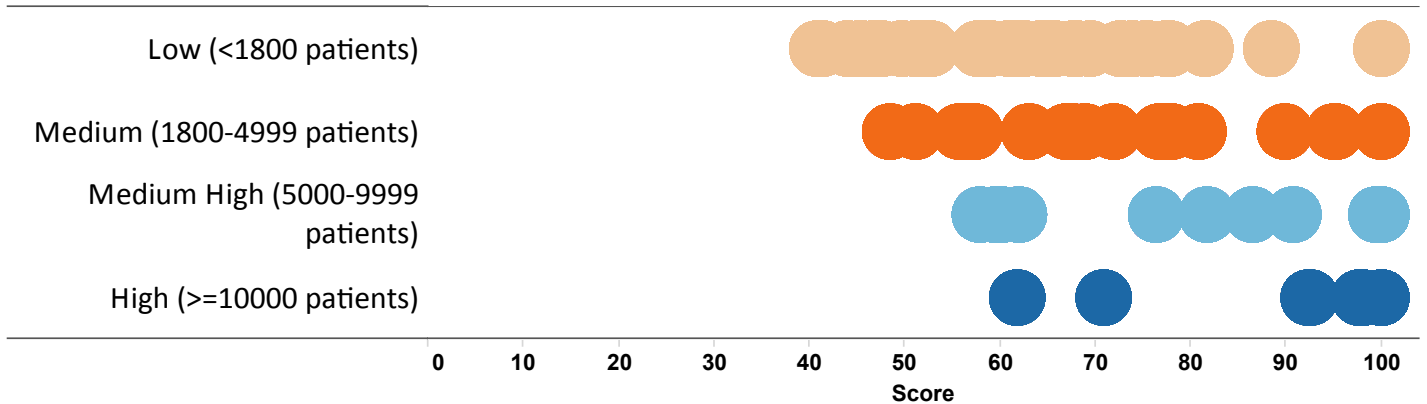
Number of Hospitals Assessed: 81

Response Rate: 96.3%

STATE SCORE AND COMPARATIVE SCORES:



DISTRIBUTION OF STATE SCORES FOR EACH VOLUME TYPE:



BREAKDOWN OF STATE SCORES FOR EACH VOLUME TYPE:

Annual Pediatric Volume	# of Hospitals	Avg. Score	Median Score	Min. Score	Max. Score
Low (<1800 patients)	38	61.7	61.5	41	100
Medium (1800-4999 patients)	18	72.2	70.4	48	100
Medium High (5000-9999 patients)	13	82.6	86.4	58	100
High (>=10000 patients)	9	90.1	97.7	62	100
Grand Total	78	70.9	67.6	41	100

NOTE: Blank indicates fewer than 5 hospitals; score can't be shown.

BREAKDOWN OF NATIONAL SCORES FOR EACH VOLUME TYPE:

Annual Pediatric Volume	# of Hospitals	Avg. Score	Median Score	Min. Score	Max. Score
Low (<1800 patients)	1,629	61.9	61.3	22	100
Medium (1800-4999 patients)	1,248	69.7	69.3	27	100
Medium High (5000-9999 patients)	708	73.7	74.8	31	100
High (>=10000 patients)	561	84.2	89.8	35	100
Grand Total	4,146	69.3	68.9	22	100

NOTE: Blank indicates fewer than 5 hospitals; score can't be shown.

ANALYSIS OF YOUR SCORE:

Below are the average state scores* for each section of the assessment. The scores are based on the weighted assessment items for each section.

* The sum of the sectional scores below may vary slightly from actual overall readiness score above due to rounding.

Average Section Scores	State Section Scores	National Section Scores
Guidelines for Administration and Coordination (19 pts)	10.4	10.1
Physicians, Nurses, and Other Health Care Providers Who Staff the ED (10 pts)	5.1	5.3
Guidelines for QI/PI in the ED (7 pts)	3.3	2.9
Guidelines for Improving Pediatric Patient Safety in the ED (14 pts)	11.0	10.8
Guidelines for Policies, Procedures, and Protocols for the ED (17 pts)	10.9	10.5
Guidelines for Equipment, Supplies, and Medications for the Care of Pediatric Patients in the ED (33 pts)	30.3	29.4

Guidelines for Administration and Coordination of the ED for the Care of Children

Scored Items

	Yes (N)	% Yes	% National Yes	Difference
Nurse Coordinator	47	60.3%	59.3%	1.0%
Physician Coordinator	38	48.7%	47.4%	1.3%

Physicians, Nurses, and Other Health Care Providers Who Staff the ED

Scored Items

	Yes (N)	% Yes	% National Yes	Difference
Nurse Competency Evaluations	50	64.1%	66.6%	-2.5%
Physician Competency Evaluations	29	37.2%	38.6%	-1.4%

Guidelines QI/PI

Scored Items

	Yes (N)	% Yes	% National Yes	Difference
Does your ED have a pediatric patient care-review process?	40	51.3%	45.1%	6.2%
<i>The following results are a breakdown of those who said "Yes" to having a pediatric patient care-review process...</i>				
Collection and analysis of pediatric emergency care data	37	92.5%	88.1%	4.4%
Identification of quality indicators for children	22	55.0%	58.3%	-3.3%
Development of a plan for improvement in pediatric emergency care	32	80.0%	78.9%	1.1%
Re-evaluation of performance using outcomes-based measures	24	60.0%	73.4%	-13.4%

Guidelines for Improving Pediatric Patient Safety in the ED

Scored Items

	Yes (N)	% Yes	% National Yes	Difference
Weigh in Kilograms	50	64.1%	67.7%	-3.6%
If Weigh in Kilograms, also Record in Kilograms	41	82.0%	75.3%	6.7%
Temperature, heart rate, and respiratory rate recorded	77	98.7%	98.6%	0.1%
Blood pressure monitoring available based on severity of illness	77	98.7%	98.1%	0.6%
Pulse oximetry monitoring available based on severity of illness	78	100.0%	99.7%	0.3%
Written procedure in place for notification of physicians when abnormal vital signs	53	67.9%	70.1%	-2.2%
Process in place for the use of pre-calculated drug dosing	61	78.2%	78.9%	-0.7%
Process in place that allows for 24/7 access to interpreter services in the ED	75	96.2%	95.4%	0.7%

Guidelines for Policies, Procedures, and Protocols for the ED

Scored Items

	Yes (N)	% Yes	% National Yes	Difference
Triage policy that specifically addresses ill and injured children	49	62.8%	57.6%	5.2%
Policy for pediatric patient assessment and reassessment	59	75.6%	73.4%	2.2%
Policy for immunization assessment and management of the under-immunized child	40	51.3%	51.7%	-0.4%
Policy for child maltreatment	71	91.0%	89.6%	1.4%
Policy for death of the child in the ED	53	67.9%	58.0%	10.0%
Policy for reduced-dose radiation for CT and x-ray imaging based on pediatric age or weight	41	52.6%	52.6%	0.0%
Policy for promoting family-centered care	43	55.1%	59.6%	-4.5%
Hospital disaster plan addresses issues specific to the care of children	41	52.6%	46.8%	5.8%
Inter-facility transfer guidelines	55	70.5%	70.5%	0.0%

Guidelines for Equipment, Supplies, and Medications for the Care of Pediatric Patients in the ED

Scored Items

	Yes (N)	% Yes	% National Yes	Difference
Is the ED staff trained on the location of all pediatric equipment and medications?	78	100.0%	99.5%	0.5%
Is there a daily method used to verify the proper location and function of pediatric equipment and supplies?	66	84.6%	83.1%	1.5%
Is a medication chart, length-based tape, medical software, or other system readily available to ensure proper sizing of resuscitation equipment and proper dosing of medications?	78	100.0%	99.5%	0.5%
Neonatal blood pressure cuff	69	88.5%	92.0%	-3.6%
Infant blood pressure cuff	78	100.0%	99.1%	0.9%
Child blood pressure cuff	78	100.0%	99.9%	0.1%
Defibrillator with pediatric and adult capabilities including pads/paddles	78	100.0%	99.7%	0.3%
Pulse oximeter with pediatric and adult probes	78	100.0%	99.7%	0.3%
Continuous end-tidal CO2 monitoring device	73	93.6%	81.7%	11.9%
22 gauge catheter-over-the-needle	78	100.0%	99.7%	0.3%
24 gauge catheter-over-the-needle	78	100.0%	99.5%	0.5%
Pediatric intra-osseous needles	77	98.7%	97.6%	1.1%

Guidelines for Equipment, Supplies, and Medications for the Care of Pediatric Patients in the ED *cont.*

Scored Items

	Yes (N)	% Yes	% National Yes	Difference
IV administration sets with calibrated chambers and extension tubing and/or infusion devices with ability to regulate rate and volume of infusate	77	98.7%	95.3%	3.4%
Umbilical vein catheters (3.5F or 5.0F)	52	66.7%	62.3%	4.3%
Central venous catheters (any two sizes in range, 4F-7F)	55	70.5%	62.5%	8.0%
Endotracheal tubes: cuffed or uncuffed 2.5 mm	73	93.6%	94.3%	-0.7%
Endotracheal tubes: cuffed or uncuffed 3.0 mm	75	96.2%	97.0%	-0.8%
Endotracheal tubes: cuffed or uncuffed 3.5 mm	76	97.4%	98.4%	-1.0%
Endotracheal tubes: cuffed or uncuffed 4.0 mm	78	100.0%	99.4%	0.6%
Endotracheal tubes: cuffed or uncuffed 4.5 mm	77	98.7%	98.6%	0.1%
Endotracheal tubes: cuffed or uncuffed 5.0 mm	78	100.0%	99.4%	0.6%
Endotracheal tubes: cuffed or uncuffed 5.5 mm	76	97.4%	98.1%	-0.7%
Endotracheal tubes: cuffed or uncuffed 6.0 mm	76	97.4%	99.2%	-1.7%
Laryngoscope blades: straight, size 00	62	79.5%	77.4%	2.0%
Laryngoscope blades: straight, size 0	72	92.3%	94.1%	-1.8%
Laryngoscope blades: straight, size 1	75	96.2%	98.2%	-2.1%
Laryngoscope blades: straight, size 2	77	98.7%	96.8%	1.9%

Guidelines for Equipment, Supplies, and Medications for the Care of Pediatric Patients in the ED *cont.*

Scored Items

	Yes (N)	% Yes	% National Yes	Difference
Laryngoscope blades: curved, size 2	76	97.4%	96.5%	1.0%
Pediatric-sized Magill forceps	71	91.0%	82.4%	8.6%
Nasopharyngeal airways: infant-sized	59	75.6%	82.9%	-7.2%
Nasopharyngeal airways: child-sized	67	85.9%	87.7%	-1.8%
Oropharyngeal airways: size 0 (50mm)	75	96.2%	92.5%	3.6%
Oropharyngeal airways: size 1 (60mm)	78	100.0%	96.6%	3.4%
Oropharyngeal airways: size 2 (70mm)	77	98.7%	95.6%	3.1%
Oropharyngeal airways: size 3 (80mm)	78	100.0%	96.8%	3.2%
Stylets for pediatric/infant-sized endotracheal tubes	76	97.4%	97.4%	0.1%
Tracheostomy tubes: size 3.0 mm	61	78.2%	68.0%	10.2%
Tracheostomy tubes: size 3.5 mm	57	73.1%	67.8%	5.2%
Tracheostomy tubes: size 4.0 mm	65	83.3%	75.0%	8.3%
Bag-mask device, self inflating: infant, 450 ml	75	96.2%	96.8%	-0.6%
Masks to fit bag-mask device adaptor: neonatal	71	91.0%	92.4%	-1.4%
Masks to fit bag-mask device adaptor: infant	78	100.0%	98.6%	1.4%
Masks to fit bag-mask device adaptor: child	78	100.0%	99.0%	1.0%
Clear oxygen masks: standard infant	74	94.9%	93.4%	1.5%
Clear oxygen masks: standard child	78	100.0%	98.1%	1.9%
Non-rebreather masks: infant-sized	69	88.5%	84.1%	4.4%
Non-rebreather masks: child-sized	76	97.4%	93.8%	3.7%

Guidelines for Equipment, Supplies, and Medications for the Care of Pediatric Patients in the ED *cont.***Scored Items**

	Yes (N)	% Yes	% National Yes	Difference
Nasal cannulas: infant	75	96.2%	91.0%	5.2%
Nasal cannulas: child	77	98.7%	95.9%	2.8%
Laryngeal mask airways: size 1	53	67.9%	57.2%	10.8%
Laryngeal mask airways: size: 1.5	50	64.1%	55.1%	9.0%
Laryngeal mask airways: size: 2	56	71.8%	60.9%	10.9%
Laryngeal mask airways: size: 2.5	52	66.7%	58.5%	8.2%
Laryngeal mask airways: size: 3	59	75.6%	66.3%	9.3%
Suction catheters: at least one in range 6-8F	78	100.0%	98.5%	1.5%
Suction catheters: at least one in range 10-12F	78	100.0%	99.2%	0.8%
Supplies/kit for pediatric patients with difficult airways (supraglottic airways of all sizes, needle cricothyrotomy supplies, surgical cricothyrotomy kit)	66	84.6%	75.3%	9.3%